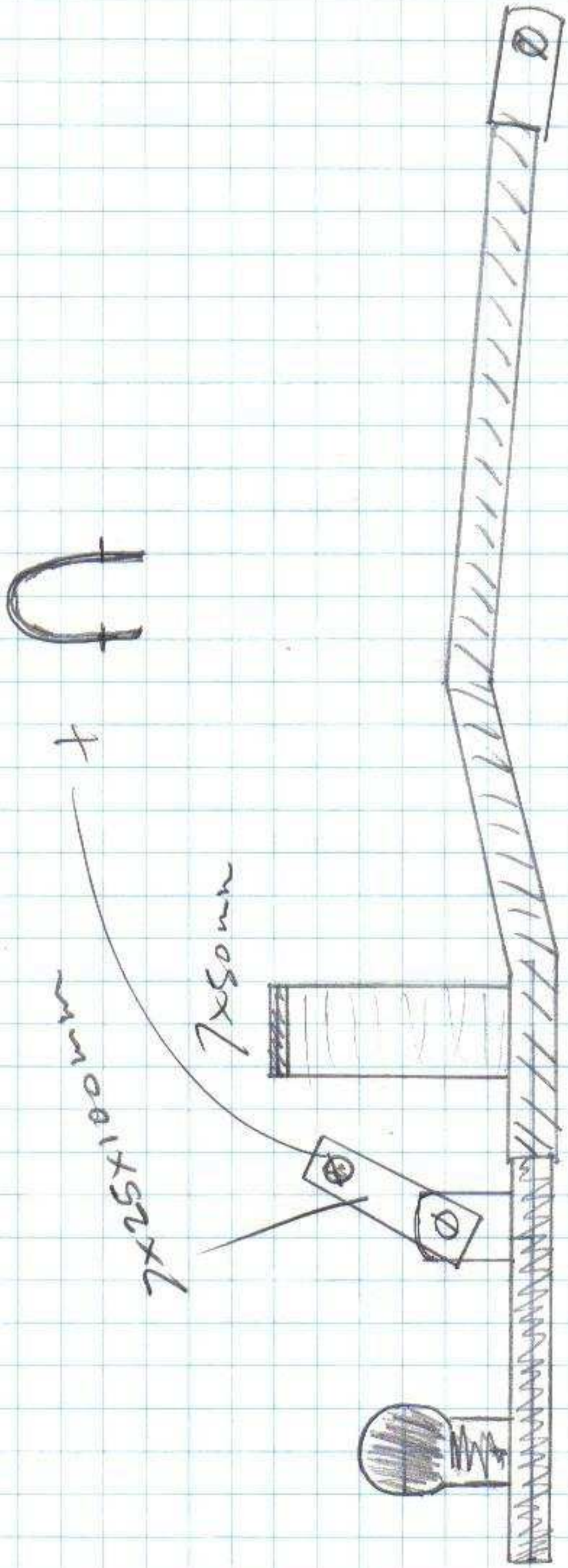


$2 \times \phi 22 \text{ m} \times 605 \text{ mm} = 1210 \text{ mm} \rightarrow 1500 \text{ mm}$   
 $\phi 19 \text{ mm} = 970 \text{ mm} \rightarrow 1000 \text{ mm}$   
 $(7 \times 50) \times 190 \text{ mm} \times 2 = 400 \rightarrow 500 \text{ mm}$   
 $(2 \times 25) \times 100 \text{ mm} \times 2 \times 2 = 400 \rightarrow 500 \text{ mm}$

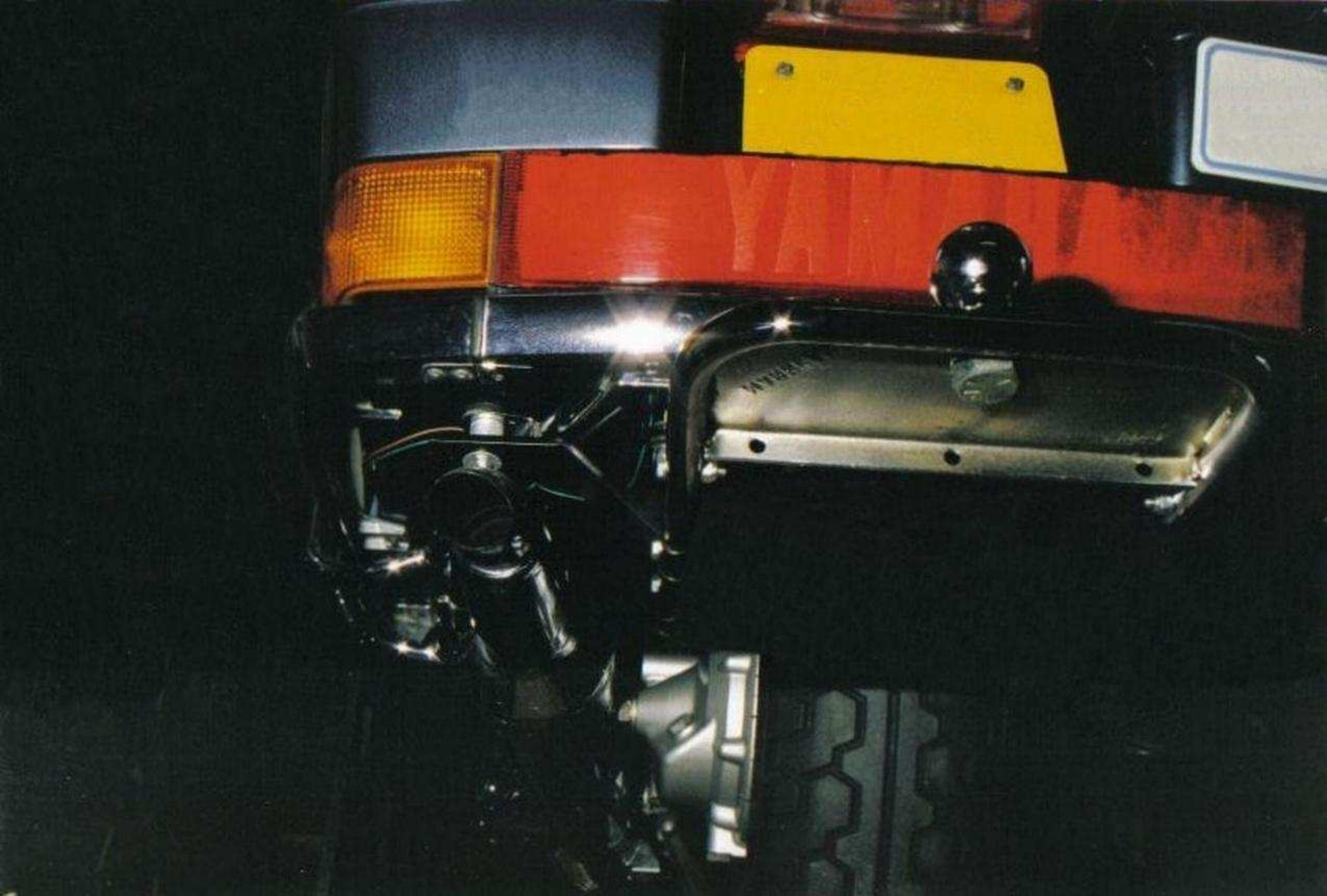
















FOR MORE INFORMATION, CONTACT HARLEY-DAVIDSON MOTORCYCLES, INC., 1400 KENNESAW AVENUE, MILWAUKEE, WISCONSIN 53153. HARLEY-DAVIDSON MOTORCYCLES, INC. IS A DIVISION OF HARLEY-DAVIDSON, INC., 1400 KENNESAW AVENUE, MILWAUKEE, WISCONSIN 53153.

HARLEY-DAVIDSON

MOTORCYCLES



